

2" GALVANIZED VENT AT HIGH END OF CASING.
VENT TO HAVE INSECT SCREEN WELDED TO END.
VENT TO BE LOCATED AT RAILROAD R/W

ENCLOSE ENDS WITH 8" BRICK MASONRY
(WATERTIGHT GROUT AS REQUIRED)

RESTRAINED JOINT D.I.P. CARRIER

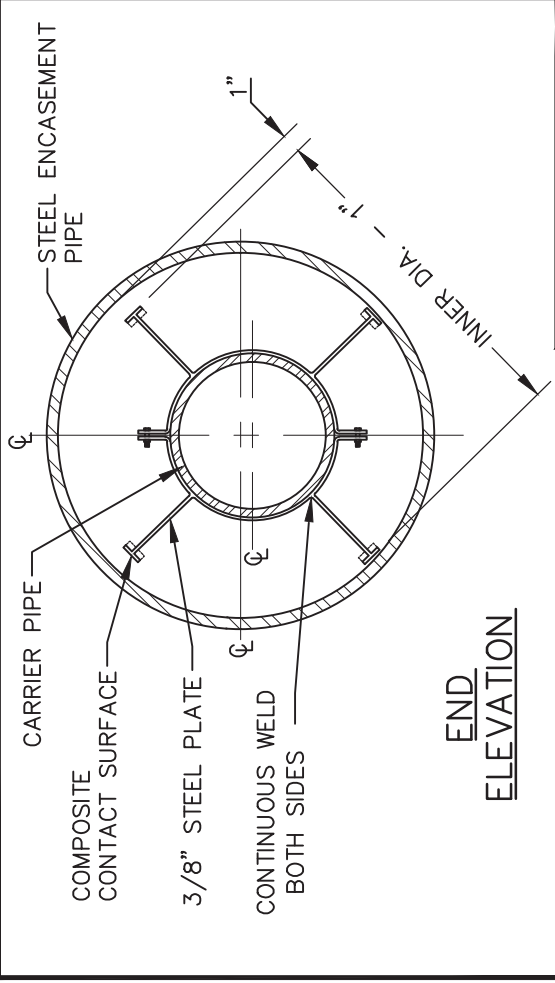
STEEL SPACER

SLOPE TO DRAIN

DRAINAGE GRAVEL
(10 CU. FT. STONE)

3/4" WEEPHOLE AT LOW
POINT OF CASING

ELEVATION



COMPOSITE CONTACT SURFACE

3/8" STEEL PLATE
CONTINUOUS WELD
BOTH SIDES

END
ELEVATION

NOTES:

1. STEEL SPACERS SHALL BE USED FOR SUPPORT OF THE CARRIER PIPE WITHIN THE CASING PIPE. FOR RAILROAD CROSSINGS WITH IMPRESSED CURRENT OR WITH ENCASEMENT PIPES REQUIRING CATHODIC PROTECTION, STEEL SPACERS WITH EPDM OR COMPOSITE CONTACT SURFACES SHALL BE USED.
2. A MINIMUM SPACING OF 2 SPACERS PER JOINT OF CARRIER PIPE SHALL BE REQUIRED. 3 SPACERS ARE REQUIRED FOR CARRIER PIPE ≥ 36 INCHES.
3. THE SPACERS SHALL BE LOCATED EVENLY ALONG THE CARRIER PIPE SUCH THAT EACH SPACER SUPPORTS THE SAME UNIT WEIGHT OF THE CARRIER MAIN.
4. THE PROPOSED ENCASEMENT PIPE & CARRIER PIPE SHALL COMPLY WITH ALL APPLICABLE TOWN & OTHER JURISDICTIONAL REQUIREMENTS, WHICHEVER IS MORE STRINGENT.
5. NO BLASTING ALLOWED IN RAILROAD RIGHT-OF-WAY.



EFFECTIVE: 4/11/22

STEEL ENCASEMENT & CARRIER PIPE - UNDER RAILROAD

TOWN OF PITTSBORO
STANDARD CONSTRUCTION
DETAIL
STANDARD NO: UT-02-003