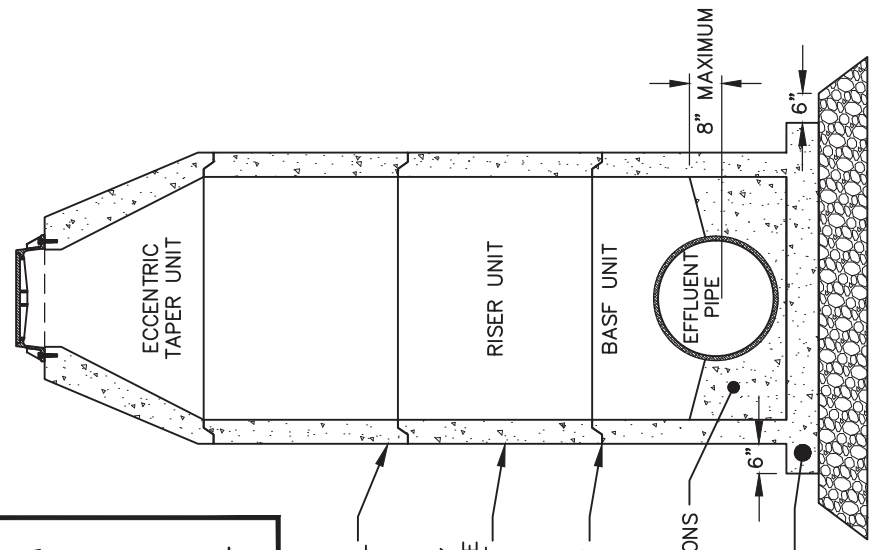


SECTION B-B



SECTION A-A

EXTENDED BASE THICKNESS
4' DIAMETER: 6"
5' DIAMETER: 8"

ALL EXTERNAL JOINTS SHALL BE SEALED WITH AN APPROVED JOINT SEALING MATERIAL

ALL LIFT HOLES WHICH COMPLETELY PENETRATE THE MANHOLE SHALL BE FILLED WITH NON-SHRINKING GROUT

- NOTES:**
1. ALL MANHOLE CONNECTIONS SHALL BE PREFABRICATED OR CORED WITH A CONCRETE CORING MACHINE.
 2. ALL MANHOLES SHALL BE VACUUM TESTED.
 3. EXTENDED BASE REQUIRED FOR ALL MANHOLES WITH MORE THAN 12-FT DEPTH OF BURY.
 4. PROVIDE A MINIMUM 0.1 FOOT IN-OUT DROP FOR STRAIGHT RUNS AND 0.2 FOOT IN-OUT DROP FOR ANGLE RUNS.



STANDARD PRECAST CONCRETE MANHOLE

TOWN OF PITTSBORO
STANDARD CONSTRUCTION
DETAIL
STANDARD NO.: SS-04-001

EFFECTIVE: 2/14/22